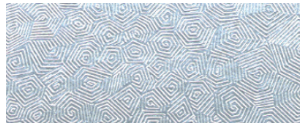


COLORS AND FINISHES

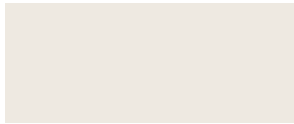
ARCHITECTURAL ROOF COLORS

Varco Pruden uses high quality paint systems designed to provide long-term performance and protection. Each coating is formulated with thoroughly researched, tested and field proven pretreatments, primers, resins and pigments that can meet your design and performance requirements.

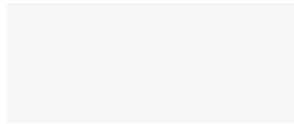
This paint system combines ceramic pigmentation with polyvinylidene fluoride for superior, long-lasting performance. PVDF finishes are respected for their durability, resistance and color retention. Our KXL finishes are warranted for up to 25 years.



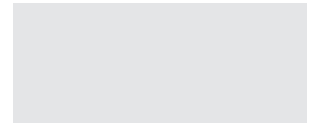
Acrylic Coated Galvalume™



Cool Egyptian White



Cool Cotton White



Cool Artic White



Cool Hemlock Green



Cool Leaf Green



Cool Cobalt Blue



Cool Colonial Red



Cool Jade Green*



Cool Bermuda Green



Cool Imperial Blue*



Cool Bright Red*



Cool Straw Gold*



Cool Sierra Tan



Cool Parchment*



Cool Dark Bronze



Cool Granite Gray



Cool Old Town Gray*



Cool Zinc Gray*



Cool Weathered Copper*



Cool Ebony†



Cool Metallic Silver*



Cool Copper Penny*

Colors printed on this page not exactly match actual panel colors. Please request panel swatches for true color match.

Colors shown above are for SLR II roof panels. † Available only as a trim color.

* Non-stocked colors may require minimum quantity order plus additional material procurement lead-time.

LONG-TERM BEAUTY, UNMATCHED PROTECTION, COOL COLOR PERFORMANCE AND SUPERIOR QUALITY.

70% PVDF finishes meet both Kynar 500® and Hylar 5000® specifications. All colors shown approximate actual paint colors as accurately as possible. Actual paint colors may vary. Colors in this guide are for reference only. Varco Pruden Buildings reserves the right to change color offerings shown here without notice. Painted metal samples are available.

Custom color matching is available through Varco Pruden. Orders with custom colors are subject to special pricing and delivery considerations.

PHYSICAL AND PERFORMANCE PROPERTIES ON COATED STEEL ¹		
Specular Gloss at 60°	ASTM D 523 ⁽²⁾	25-35
Pencil Hardness	ASTM D 3363	F-2H
T-Bend ⁽³⁾	ASTM D 4145	2T; No pick off
Adhesion	ASTM D 3359	Reverse impact 1/16" crosshatch; No adhesion loss
Humidity Resistance 100% humidity @ 95° F	ASTM D 2247 ASTM D 714	Passes 1500 hours No #8 blisters
Reverse Impact	ASTM D 2794	3.0 x metal thickness, no cracking or adhesion loss
Salt Spray Resistance 5% salt fog @ 95° F	ASTM B 117	Passes 1000 hours less than 1/8" avg. creepage from scribe. None or few #8 blisters
South Florida Exposure 10 yrs. @ 45°	ASTM D 2244 ASTM D 4214	Max 5 fade Max 8 chalk
Dry Film Thickness	ASTM D 1400	0.20 mil primer; 0.75 mil topcoat
Acid Resistance	ASTM D 1308	10% muratic acid 24 hours – no effect; 20% muratic acid 18 hours – no effect
Acid Rain Test	Kesternich SO ₂	15 cycles min. DIN 50018, no objectionable color change
Alkali Resistance	ASTM D 1308	10%, 25% NaOH, 1 hour; no effect

¹Includes G90 hot dip galvanized and Galvalume 2. ²American Society for Testing and Materials. ³Fracturing or rupturing of substrate will rupture coatings. Heavy gauge and clad steel substrates impose limitations on formability. KXL coatings are generally flexible beyond the point of substrate rupture.

VP COOL COLOR INFORMATION

Color Name & Code	Solar Reflectance ¹	Thermal Emittance ²	SRI ³	LEED 2.2 Low Slope Initial SRI>or=78	LEED 4.0 Low Slope Initial SRI>or=82	LEED 2.2 Steep Slope Initial SRI>or=29	LEED 4.0 Steep Slope Initial SRI>or=29
Acrylic Coated Galvalume (no code)	0.68	0.30	65	No	No	Yes	Yes
Cool Arctic White - BN5W183B	0.64	0.84	76	No	No	Yes	Yes
Cool Bermuda Green - BN5G176B	0.30	0.84	29	No	No	Yes	No
Cool Brite Red - BN5R146B	0.42	0.85	46	No	No	Yes	Yes
Cool Cobalt Blue - BN5L148B	0.33	0.84	33	No	No	Yes	No
Cool Colonial Red - BN5R143B	0.34	0.85	35	No	No	Yes	No
Cool Copper Penny - BN8P113B	0.48	0.83	53	No	No	Yes	Yes
Cool Cotton White - BN5W184B	0.76	0.84	93	Yes	Yes	Yes	Yes
Cool Dark Bronze - BN5N239B	0.32	0.84	32	No	No	Yes	No
Cool Ebony - BN5B114B	0.30	0.84	29	No	No	Yes	No
Cool Egyptian White - BN5I137B	0.63	0.83	74	No	No	Yes	Yes
Cool Granite Gray - BN5A221B	0.55	0.84	63	No	No	Yes	Yes
Cool Hemlock Green - BN5G175B	0.34	0.85	35	No	No	Yes	No
Cool Imperial Blue - BN5L149B	0.30	0.84	29	No	No	Yes	No
Cool Jade Green - BN5G181B	0.29	0.86	29	No	No	Yes	No
Cool Leaf Green - BN5G174B	0.30	0.85	30	No	No	Yes	No
Cool Metallic Silver - BN8A230B	0.57	0.82	65	No	No	Yes	Yes
Cool Old Town Gray - BN5A223B	0.40	0.85	43	No	No	Yes	Yes
Cool Parchment - BN5N240B	0.51	0.84	58	No	No	Yes	Yes
Cool Sierra Tan - BN5N235B	0.49	0.84	55	No	No	Yes	Yes
Cool Straw Gold - BN5I136B	0.61	0.84	72	No	No	Yes	Yes
Cool Weathered Copper - BN5N236B	0.34	0.83	72	No	No	Yes	No
Cool Zinc Gray - BN5A222B	0.37	0.85	39	No	No	Yes	Yes

Authorized Independent Testing Laboratory Results: 1 = AITL ASTM C1549 CRRC Tested Lab Results. 2 = AITL ASTM C1371 CRRC Tested Lab Results. 3 = AITL ASTM E1980 CRRC Tested Lab Results. (Low Slope ≤ 2:12; Steep Slope >2:12)

Note: All panels formed from light gauge metal may exhibit waviness, also known as "Oil Canning," commonly occurring in, but not restricted to, flat portions of a panel. This inherent characteristic is not a defect of material and is not cause for rejection.

- Kynar 500® is a registered trademark of Arkema.
- Hylar 5000® is a registered trademark of Solvay Solexis.
- Galvalume® is a registered trademark of BIEC International, Inc.