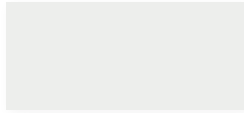
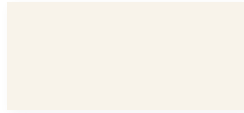


# ARCHITECTURAL COLOR PALETTE

Core Colors



Regal White<sup>□</sup>  
SR: .68 IE: .86 SRI: 82



Bone White<sup>□</sup>  
SR: .72 IE: .84 SRI: 87



Almond<sup>Δ</sup>  
SR: .63 IE: .86 SRI: 75



Sandstone<sup>Δ</sup>  
SR: .54 IE: .86 SRI: 63



Surrey Beige<sup>Δ</sup>  
SR: .40 IE: .86 SRI: 43



Sierra Tan  
SR: .35 IE: .86 SRI: 37



Medium Bronze  
SR: .30 IE: .87 SRI: 31



Mansard Brown  
SR: .29 IE: .86 SRI: 29



Dark Bronze  
SR: .26 IE: .84 SRI: 24



Extra Dark Bronze\*  
SR: .05 IE: .89 SRI: N/A



Patina Green  
SR: .29 IE: .87 SRI: 29



Hemlock Green  
SR: .28 IE: .87 SRI: 28



Classic Green  
SR: .26 IE: .84 SRI: 24



Hartford Green\*  
SR: .10 IE: .82 SRI: 2



Teal  
SR: .28 IE: .87 SRI: 28



Slate Blue  
SR: .26 IE: .85 SRI: 24



Regal Blue  
SR: .28 IE: .86 SRI: 27



Terra Cotta  
SR: .34 IE: .87 SRI: 36



Banner Red  
SR: .42 IE: .84 SRI: 45



Colonial Red  
SR: .34 IE: .86 SRI: 35



Brandywine  
SR: .26 IE: .85 SRI: 24



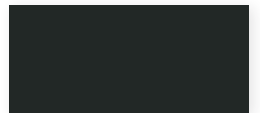
Dove Gray  
SR: .49 IE: .87 SRI: 56



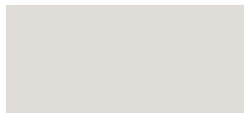
Slate Gray<sup>Δ</sup>  
SR: .37 IE: .86 SRI: 39



Charcoal  
SR: .32 IE: .85 SRI: 32



Matte Black  
SR: .27 IE: .86 SRI: 26



Stone White<sup>Δ</sup>  
SR: .61 IE: .85 SRI: 72

\*\* Featuring a pearlescent mica finish; subject to premium pricing. Colors shown are as close to actual colors as allowed by the printing process. Actual metal samples are available. Colors may appear different when viewed at different angles and under different lighting conditions. Due to product improvements, changes and other factors, we reserve the right to change or delete information herein without prior notice.

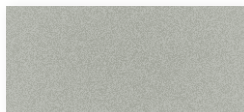


\*All Standard Stocked colors are ENERGY STAR<sup>®</sup> approved except Hartford Green, Extra Dark Bronze

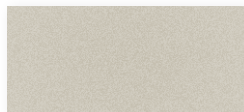
□ LEED<sup>®</sup> compliant for low slope and steep slope  
Δ LEED<sup>®</sup> compliant for steep slope only

PVDF - 70% polyvinylidene flouride resin paint system

Mica Colors<sup>™</sup>



Bright Silver<sup>Δ</sup> S66  
SR: .60 IE: .77 SRI: 68



Silversmith<sup>Δ</sup> S15  
SR: .53 IE: .78 SRI: 59



Champagne S20  
SR: .37 IE: .83 SRI: 38



Pewter S11  
SR: .36 IE: .85 SRI: 38



Bright Copper<sup>Δ</sup> S25  
SR: .49 IE: .85 SRI: 55

26 Gauge Low Gloss



Sierra Tan  
SR: .46 IE: .87 SRI: 52



Slate Gray  
SR: .37 IE: .86 SRI: 39



Medium Bronze  
SR: .30 IE: .86 SRI: 30



Dark Bronze  
SR: .28 IE: .86 SRI: 27



Colonial Red  
SR: .31 IE: .86 SRI: 31



Classic Green  
SR: .31 IE: .87 SRI: 32



Hartford Green  
SR: .08 IE: .89 SRI: 3



Slate Blue  
SR: .30 IE: .87 SRI: 31



Matte Black  
SR: .26 IE: .86 SRI: 25

Acrylic Coated Galvalume also available (not pictured)

877-495-7663  
www.sentriclad.com

ARCHITECTURAL PVDF				STEEL				ALUMINUM			
COLOR	SR	IE	SRI	26GA.†	24GA.†	22GA.‡	18GA.‡	.032"†	.040"†	.050"†	.063"†
Regal White	.68	.86	82		●■▲◆	●	●	●■			●
Bone White	.72	.84	87		●	●	●	●	●	●	
Almond	.63	.86	75		●			●	●	●	
Sandstone	.54	.86	63		●■▲◆	●		●	●	●	
Surrey Beige	.40	.86	43		◆	●		●	●	●	
Sierra Tan	.35	.86	37	LG	●			●	●	●	
Medium Bronze	.30	.87	31	LG	●■◆	●	●	●	●	●	●
Mansard Brown	.29	.86	29		●			●	●	●	
Dark Bronze	.26	.84	24	LG	●■▲◆	●	●	●■	●	●	●
Extra Dark Bronze	.05	.89	n/a		●			●		●	
Patina Green	.29	.87	29		●			●			
Hemlock Green	.28	.87	28		●						
Classic Green	.26	.84	24	LG	●■	●		●	●		
Hartford Green	.10	.82	2	LG	●			●		●	
Teal	.28	.87	28		●						
Regal Blue	.28	.86	27		●			●			
Slate Blue	.26	.85	24	LG	●			●			
Terra Cotta	.34	.87	36		●						
Banner Red	.42	.84	45		●			●			
Colonial Red	.34	.86	35	LG	●			●			
Brandywine	.26	.85	24		●			●			
Dove Gray	.49	.87	56		●			●■		●	
Slate Gray	.37	.86	39	LG	◆			●	●		
Charcoal	.32	.85	32		●	●		●	●	●	
Matte Black	.27	.86	26	LG	●	●		●	●	●	
Bright Silver	.60	.77	68		●			●■		●	
Silversmith	.53	.78	59		●			●			
Champagne	.37	.83	38		●			●			
Pewter	.36	.85	38		●			●			
Bright Copper	.49	.85	55	●	●■			●■			
Stone White	.61	.85	72		●				●		

PAINT PERFORMANCE PROPERTIES	HOT DIPPED GALVANIZED STEEL OR GALVALUME®	ALUMINUM
<b>Accelerated Weathering</b> ASTM D 4587 (Drew Cycle Weatherometer) ASTM G 23	Hours: 3,000 Total Chalk: Rating 8 Color: 5 Δ E Hunter units max Hours: 5,000 Total Chalk: Rating 8 Color: 5 Δ E Hunter units max	Hours: 3,000 Total Chalk: Rating 8 Color: 5 Δ E Hunter units max Hours: 5,000 Total Chalk: Rating 8 Color: 5 Δ E Hunter units max
<b>Salt Spray</b> ASTM B 117	Hours: 1,000 Total Scribe: Rating 7 1/16" (1.6mm) Field: Rating 10, no blisters	Hours: 3,000 Total Scribe: Rating 10, no creepage Field: Rating 10, no blisters
<b>Humidity</b> ASTM D 2247	Hours: 2,000 Total Rating: 10, no blisters	Hours: 3,000 Total Rating: 10, no blisters
<b>Formability</b> ASTM D 4145	0T-3T	0T-3T
<b>ASTM D 522</b> (Elongation over 1/8" mandrel)	No cracking No loss of adhesion	No cracking No loss of adhesion
<b>Pencil Hardness</b> ASTM D 3363	HB-2H	HB-2H
<b>Abrasion Resistance</b> ASTM D 968	55-75 Liters of falling sand	55-75 Liters of falling sand
<b>Specular Gloss</b> ASTM D 523	20-35 at 60°	20-35 at 60°
<b>Reverse Impact</b> ASTM D 2794	2 x Metal thickness in inch-lbs. No loss of adhesion	1 1/2 x Metal thickness in inch-lbs. No loss of adhesion
<b>Flame Test</b> ASTM E 84	Class A rated coating	Class A rated coating

† Standard Coil Width is 48.25"  
‡ Standard Coil Width is 44.375"  
● Available in Standard Coil Width.  
■ Available in 40.25" Coil Width.  
▲ Available in 38" Coil Width.  
◆ Available in 44.375" Coil Width.  
LG Refer to website for reflective ratings

**NOTES ON AVAILABILITY:**

- 26ga, 24ga, .032", .040", .050" & .063" are standard 48.25" in width, 22ga & 18ga are 44.375" in width for painted items.
  - Standard inventory is non-embossed. Please contact us for the availability of stucco embossing.
  - Protective strippable film is available upon request.
  - Mica colors are subject to premium pricing. Due to the unique effect of the Mica finishes, appearances many vary from batch to batch.
  - Subject to change without notice.
  - Unpainted, acrylic coated, Aluminum-Zinc Alloy steel (AZ-55) is maintained in: 26ga x 20", 26ga x 28", 26ga x 48.25", 24ga x 20", 24ga x 24", 24ga x 28", 24ga x 48.25", 22ga x 44.375", 22ga x 48.25", 20ga x 44.375" and 18ga x 44.375".
  - All colors are supplied in Medium Gloss (20-35 at 60°). Low Gloss available subject to minimum coating run.
- SentriClad® standard architectural colors and finishes feature 70% polyvinylidene fluoride (PVDF) resin paint systems to ensure long term color retention and performance. Custom colors and finishes are also available. Minimum quantities and set up charges may apply.

877-495-7663 www.sentrigard.com



PROUDLY FINISHED WITH  
**SHERWIN-WILLIAMS**  
Coil Coatings