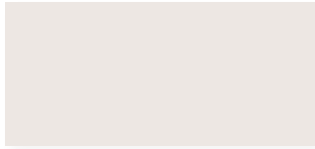
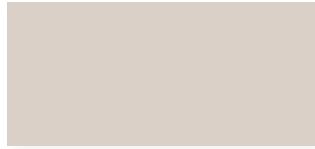


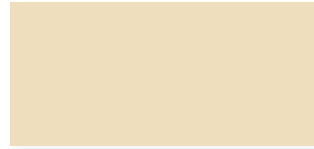
Standard ARMOR TECH™ Coatings



Glacier White
SRI-85



Stone White
SRI-71



Ivory
SRI-68



Light Stone
SRI-68



Sandstone
SRI-55



Hickory
SRI-48



Sterling Grey
SRI-43



Charcoal Grey
SRI-25



Ash Grey
SRI-58



Pacific Blue
SRI-25



Tahoe Blue
SRI-25



Sage Green
SRI-31



Forest Green
SRI-32



Pine Green
SRI-29



Cocoa Brown
SRI-27



Kodiak Brown
SRI-22



Tile Red
SRI-32



Weathered Copper
SRI-24



Black
SRI-24



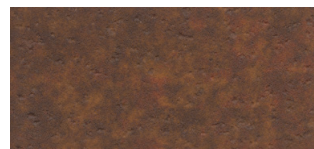
Zincalume® Plus/Galvalume®
SRI-65



Galvanized



Bonderized



Rusteeel™ (Cold-Rolled)
Rusteeel Plus™ (A606)

in partnership with:



PPG Coatings Protected

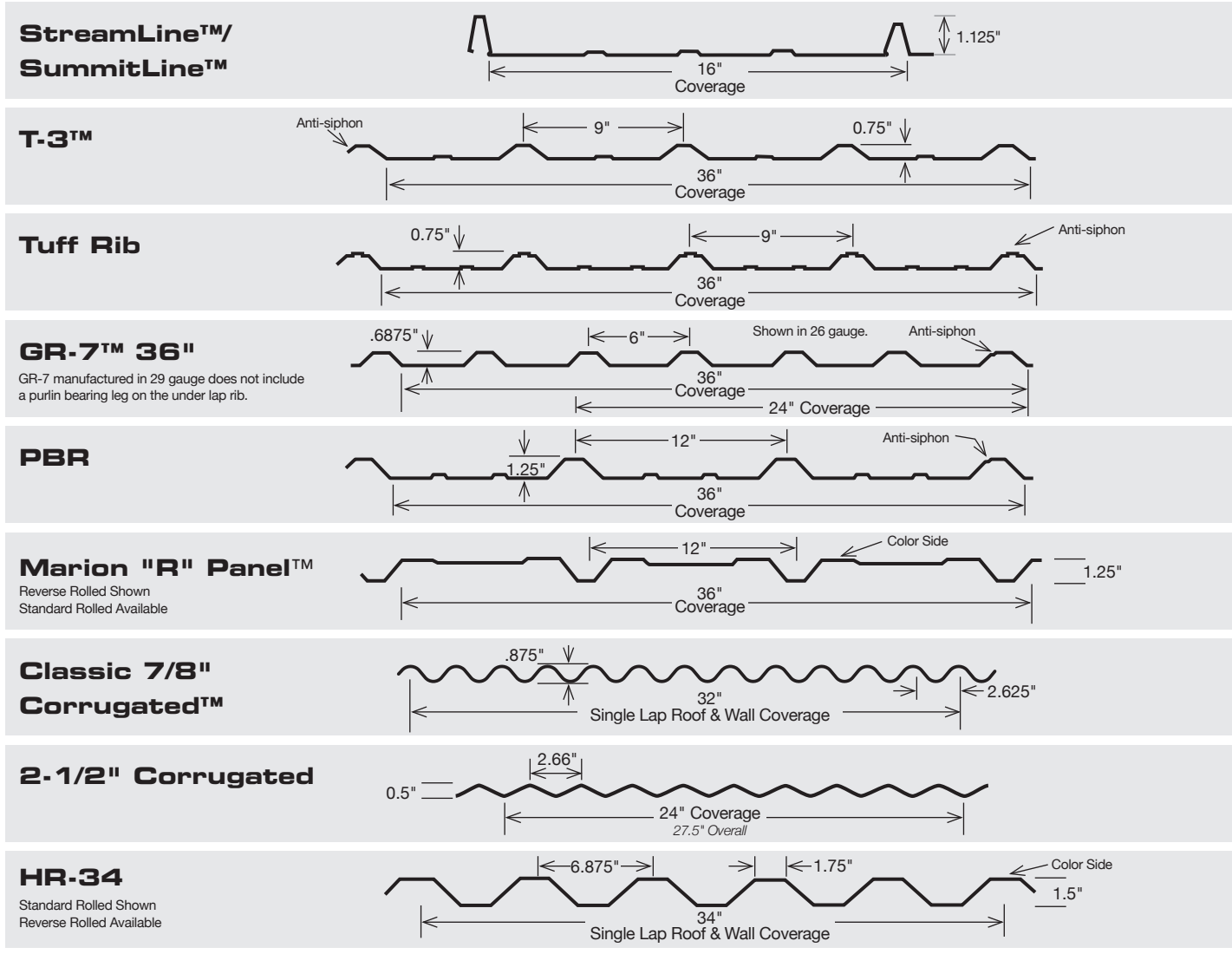


steelscape

Oil canning is not a cause for material rejection.
These printed chips provide a close representation of the colors.
Metal samples are available upon request.
See back for panel, Gauge & color availability.

Paint Specifications

In testament to our commitment to deliver the highest quality products backed by exceptional service, Taylor Metal Products offers a **40-Year, Limited Manufacturer's Warranty** covering fading, chalking, chipping, cracking and peeling.



| | Gauge | Glacier White | Stone White | Ivory | Light Stone | Sandstone | Hickory | Sterling Grey | Charcoal Grey | Ash Grey | Pacific Blue | Tahoe Blue | Sage Green | Forest Green | Pine Green | Cocoa Brown | Kodiak Brown | Tile Red | Weathered Copper | Black | Zincalume® | Galvanized | 24 gauge Bonded/derized | 22 Ga. Rusteel™ (Cold-Rolled) | 22 Ga. Rusteel Plus™ (A606) | | | | | | | | | |
|-------------------------------|---------------|---------------|--|--|-------------|-----------|---------|---------------|---------------|----------|--------------|------------|------------|--------------|------------|-------------|--------------|----------|------------------|-------|------------|------------|-------------------------|-------------------------------|-----------------------------|--|--|---|---|---|---|---|---|--|
| StreamLine™/Summitline™ | 26 | X | | | X | | X | X | X | | X | X | X | X | X | X | X | X | X | X | | | | | | | | | | | | | | |
| T-3™, Tuff Rib, GR7™ | 29 | X | X | X | X | X | X | X | X | X | X | X | X | X | X | X | X | X | X | X | X | X | | | | | | | | | | | | |
| T-3™, Tuff Rib, GR7™ | 26 | X | X | X | X | X | X | X | X | | X | X | X | X | X | X | X | X | X | * | X | X | | | | | | | | | | | | |
| PBR, HR-34, Marion "R" Panel™ | 29 | X | | | | | | | | | | | | | | | | | | | | | | | | | | | | | | | | |
| PBR, HR-34, Marion "R" Panel™ | 26 | X | X | X | X | X | X | X | X | | X | X | X | X | X | X | X | X | X | * | X | X | | | | | | | | | | | | |
| PBR, HR-34, Marion "R" Panel™ | 24 | | * | See Kynar® color chart for full color and gauge offering | | | | | | | | | | | | | | | | | | | | | | | | | | | | | | |
| PBR, HR-34, Marion "R" Panel™ | 22 | | * | See Kynar® color chart for full color and gauge offering | | | | | | | | | | | | | | | | | | | | | | | | | | X | X | | | |
| PBR, HR-34, Marion "R" Panel™ | .032 Aluminum | * | See Kynar® color chart for full color and gauge offering | | | | | | | | | | | | | | | | | | | | | | | | | | | | | | | |
| Classic 7/8" Corrugated™ | 26 | X | | | X | | X | X | X | | X | X | X | X | X | X | X | X | X | X | X | X | | | | | | | | | | | | |
| Classic 7/8" Corrugated™ | 24 | X | * | See Kynar® color chart for full color and gauge offering | | | | | | | | | | | | | | | | | | | | | | | | X | * | X | | | | |
| Classic 7/8" Corrugated™ | 22 | | * | See Kynar® color chart for full color and gauge offering | | | | | | | | | | | | | | | | | | | | | | | | | | | | X | X | |
| Classic 7/8" Corrugated™ | .032 Aluminum | * | See Kynar® color chart for full color and gauge offering | | | | | | | | | | | | | | | | | | | | | | | | | | | | | | | |
| 2.5 Corrugated, GR-5 | 29,26 | | | | | | | | | | | | | | | | | | | | X | X | | | | | | | | | | | | |

* Please Inquire for Availability

For additional information on our paint system and products please contact the Taylor Metal Products team.

Oil Canning – All light gauge metals can display waviness often referred to as "oil canning". This is caused by steel mill tolerances, substrate variation and relative reflectivity. "Oil canning" is an inherent characteristic of steel products, not a defect, and is not a cause for rejection.