

Architectural Metal Roofing and Siding

COLOR CHART



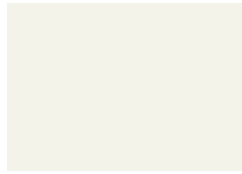
STANDARD COLORS

DURA TECH™ 5000 - Premium 70% Fluoropolymer (PVDF) Coating



ZINCALUME® Plus^{*1}

SRI: 64 • LRV: 67 • GA: 24, 22, & 20



Cool REGAL WHITE

SRI: 88 • LRV: 75 • GA: 24 & 22



Cool PARCHMENT

SRI: 58 • LRV: 40 • GA: 24 & 22



Cool SIERRA TAN

SRI: 55 • LRV: 34 • GA: 24 & 22



Cool PEBBLE

SRI: 49 • LRV: 27 • GA: 24 & 22



Cool WALNUT

SRI: 39 • LRV: 18 • GA: 24 & 22



Cool WEATHERED COPPER

SRI: 34 • LRV: 11 • GA: 24 & 22



Cool DARK BRONZE

SRI: 32 • LRV: 8 • GA: 24 & 22



Cool TERRA-COTTA

SRI: 41 • LRV: 15 • GA: 24 & 22



Cool COLONIAL RED

SRI: 35 • LRV: 9 • GA: 24 & 22



Cool OLD TOWN GRAY

SRI: 43 • LRV: 27 • GA: 24 & 22



Cool ZINC GRAY

SRI: 39 • LRV: 20 • GA: 24 & 22



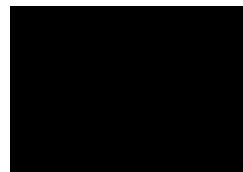
Cool SLATE GRAY

SRI: 32 • LRV: 12 • GA: 24 & 22



Cool MIDNIGHT BRONZE

SRI: 27 • LRV: 7 • GA: 24 & 22



Cool MATTE BLACK

SRI: 29 • LRV: 5 • GA: 24 & 22



Cool TAHOE BLUE

SRI: 33 • LRV: 14 • GA: 24 & 22



Cool REGAL BLUE

SRI: 29 • LRV: 10 • GA: 24 & 22



Cool SAGE GREEN

SRI: 41 • LRV: 21 • GA: 24 & 22



Cool LEAF GREEN

SRI: 30 • LRV: 11 • GA: 24 & 22



Cool FOREST GREEN

SRI: 29 • LRV: 9 • GA: 24 & 22

PREMIUM COLOR¹

(Subject to upcharge)



VINTAGE®¹

SRI: 22 • LRV: 20 • GA: 24

Vintage coated metal is an innovative coating process over a TruZinc® G90 metallic coated steel surface producing a beautiful, durable, aged-metallic finish.

METALLIC COLORS¹

DURA TECH™ mx - Premium Fluoropolymer (PVDF) Pearlescent Coating (Subject to upcharge)



Cool METALLIC SILVER¹

SRI: 65 • LRV: 50 • GA: 24 & 22



Cool SILVERSMITH¹

SRI: 61 • LRV: 54 • GA: 24 & 22



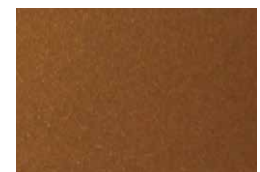
Cool ZACTique® II¹

SRI: 39 • LRV: 22 • GA: 24 & 22



Cool METALLIC CHAMPAGNE¹

SRI: 54 • LRV: 33 • GA: 24 & 22



Cool METALLIC COPPER¹

SRI: 53 • LRV: 29 • GA: 24 & 22

¹ Please note that these colors are batch sensitive (may have color variation) and are directional in nature. Different batches are not to be mixed on projects. We recommend that you request a sample of current stocked material to review actual color before ordering to ensure color accuracy. We are not responsible for color variations.

REPRESENTATION OF COLORS MAY VARY DUE TO PRINTING LIMITATIONS.

Sample color chips are available upon request. Consult your AEP Span representative for more information.



Dura Tech™ coatings combine the corrosion protection of a ZINCALUME® substrate with a highly durable resin formulation and cool pigment technology to provide excellent color retention and reduces the demand for energy.

DURA TECH 5000 and DURA TECH mx	ASTM ¹	PERFORMANCE
Standard Film Thickness	D5796	0.15 - 0.25 mil primer, 0.70 - 0.80 mil top coat 0.50 mil backer coat (Polyester system applied over a primer)
Marine Environment Film Thickness	D5796	0.70 - 0.80 mil primer, 0.70 - 0.80 mil topcoat, 0.40 - 0.05 mil clear coat
Other unusual environmental conditions or specialized pigmentation may have different primer and clear coat requirements.		
Specular Gloss	D523	8-15% at 60° (Dura Tech 5000) 15-25% at 60° (Dura Tech mx)
Pencil Hardness	D3363	F-2H
Flexibility T-Bend	D4145	2T No loss of adhesion or evidence of cracking ²
Cross Hatch Adhesion	D3359	No adhesion loss
Reverse Impact	D2794	No cracking or loss of adhesion
Abrasion, Falling Sand	D968	65 liters minimum
Flame Test	E84	Class A coating
Acid Pollutants 20% Sulfuric Acid, 18hrs. 10% Muriatic Acid, 24hrs.	D1308	No bleaching No color change, no blistering
Acid Rain Test	Kesternich	15 cycles minimum
Alkali Resistance	Kesternich	No effect
Salt Spray Resistance	B117	Passes 1,000 hours, coated steel ²
Cyclic Salt Fog	B5894	2,000 hours passes adhesion
Humidity Resistance @ 100°	B2247	Passes 2,000 hours, coated steel ²
South Florida Exposure	D2244	<5 NBS units change
UVB	D822	Passes 3,000 hours
Chalk Resistance	D4214	Rating of 8 minimum
ZINCALUME® and Galvalume® substrate	A792	55% aluminum-zinc alloy coated steel with a metallic coating weight of AZ50

Declare.

Red List Free

FINISH WARRANTIES

Limited warranties for chalk, fade and film integrity are available in durations of up to 30 years for both Dura Tech™ 5000 and Dura Tech™ mx. All AEP Span panels are offered with a corrosion warranty on Galvalume® or ZINCALUME® substrate. Terms can be affected by factors such as environment and building use. Vintage warranty varies. Inquire for details.

COMPOSITION & APPLICATION:

Dura Tech™ 5000/mx coatings are factory applied, oven cured formulas applied by approved coil coaters. They utilize Kynar 500® or Hylar 5000® PVDF resins and inorganic, IR reflective pigments for superior long-term performance.

PRETREATMENT

All substrates are pre-treated in accordance with paint manufacturer's instructions. The pretreatment is to provide a suitable surface for application of the recommended primer.

METALLIC COATINGS

With metallic coatings, minor differences in both color and appearance are normal and to be expected. It is virtually impossible to match one metallic coating to another. Due to the coil application process, striations and longitudinal patterning may also show on these products. To minimize the possible visual effects of the normal minor differences in paint and its application, an entire job should be painted at one time. Additionally, fabricated panels, flat sheets, and flashings should be orientated in the same direction for installation. Contact AEP Span representative for actual color samples prior to purchase.

VINTAGE - Vintage coated metal is an innovative coating process over a TruZinc® G90 metallic coated steel surface producing a beautiful, durable, aged-metallic finish.

Vintage specifications and warranty vary slightly from those stated above. Please visit www.aepspan.com/resource-center/warranties for details or contact an AEP Span representative for details.

¹ All tests performed to the latest ASTM revision. The test results set forth are representative of the results obtained by the paint manufacturer.

² Performances on HDG G90, ZINCALUME®, Galvalume®.

SRI=Solar Reflective Index. LRV=Light Reflectance Value. GA= Gauge of Steel. *Clear acrylic coated

SRI values in accordance with ASTM E1980 and are based on independent testing. Cool Roof Rating Council (CRRC) performance values (for CA Title 24, Energy Star) are based on color families and will differ from those listed above. Please visit www.aepspan.com for additional information.